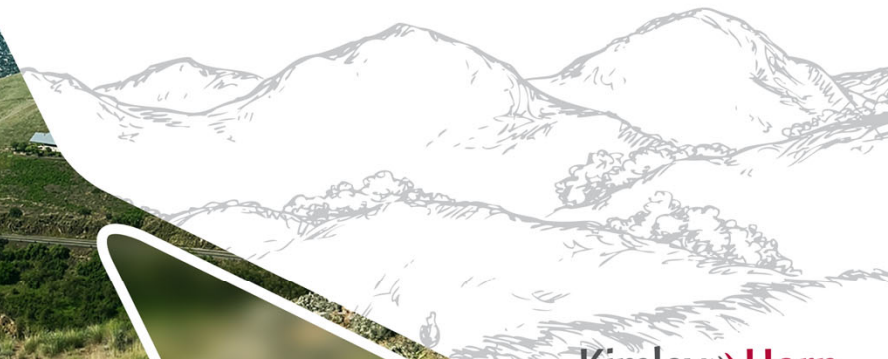




*Presentation for*  
**Lewis Clark Valley Area**  
**Regional Safety Action Plan**



**Kimley»Horn**  
Expect More. Experience Better.

**WELCOME!**



# Agenda



Project Purpose



Safe Streets and Roads for All (SS4A) Program



Regional Safety Action Plan (RSAP) Overview



Geographic Focus Areas / Safety Planning Teams



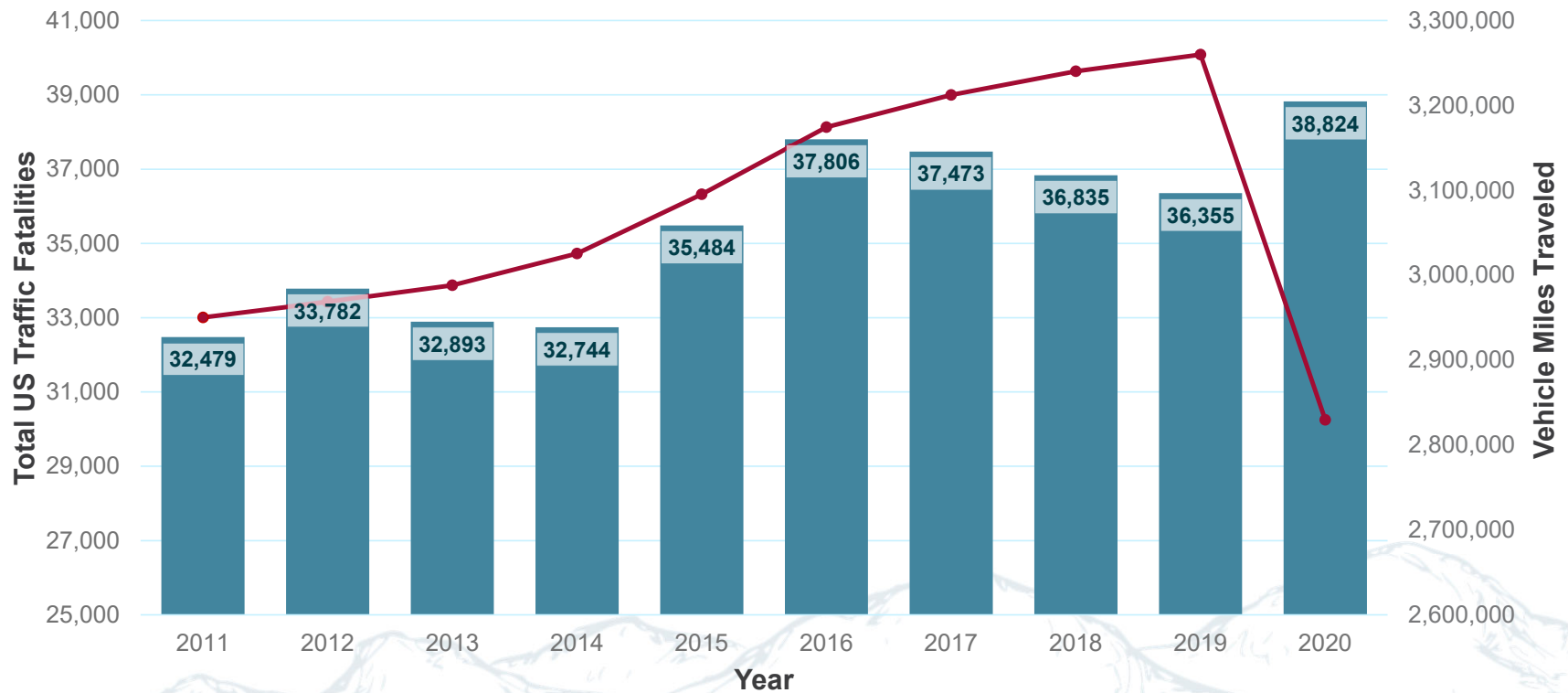
What Have We Learned So Far



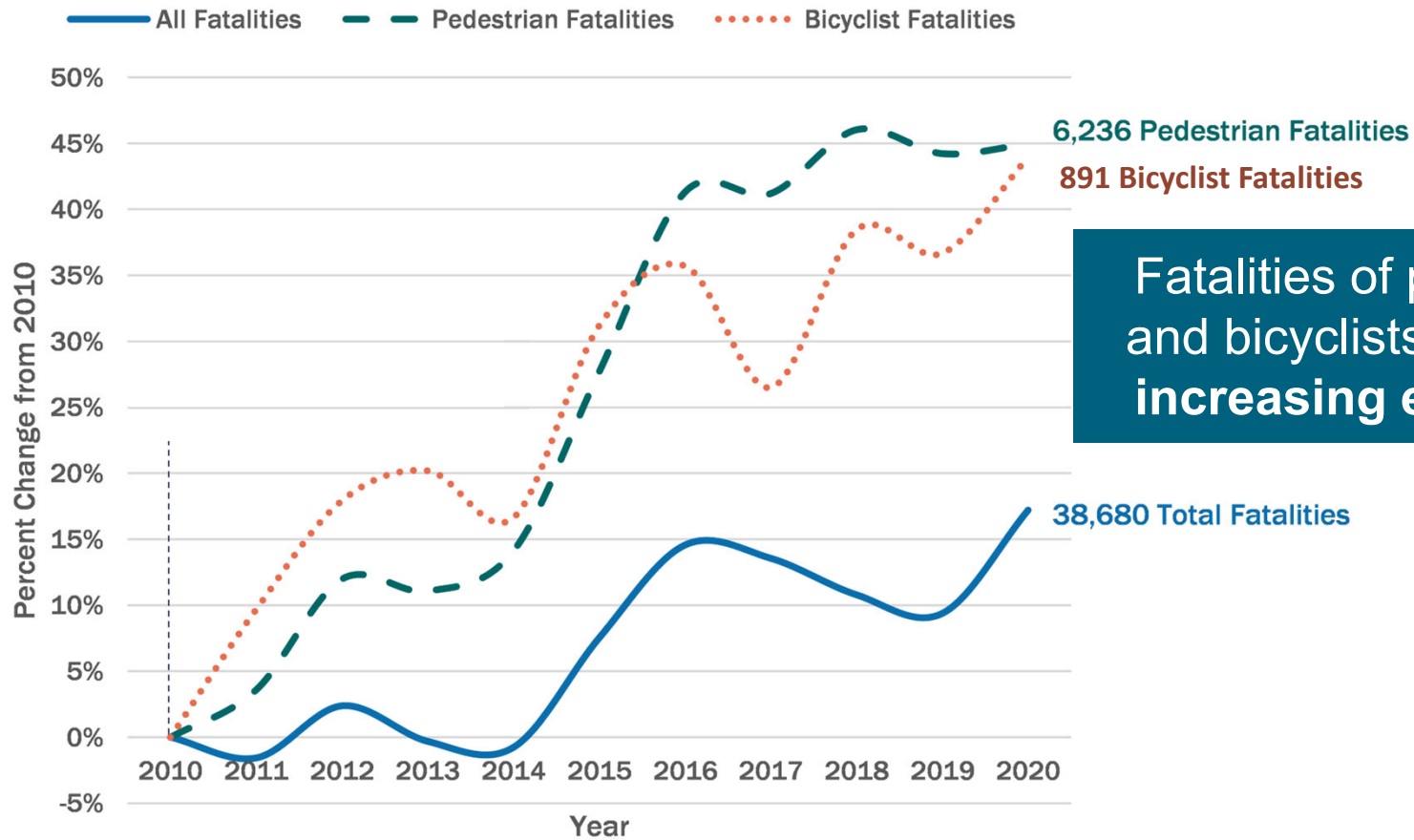
Safe System Approach

# Thousands of Lives are Lost Each Year

## Total US Traffic Fatalities and VMT (2011-2020)



# WE HAVE A NATIONAL ROADWAY SAFETY PROBLEM



Fatalities of pedestrians and bicyclists have been increasing even faster

## Safe Streets and Roads for All (SS4A)

- Bipartisan Infrastructure Law (BIL)
  - Established the Safe Streets and Roads for All (SS4A) discretionary grant program
- \$5 billion over 5 years (2022-2026)
  - Planning and Demonstration Grants
  - Implementation Grants



## LCVMPO Regional Safety Action Plan

*“A plan to provide local governments the means to make strategic roadway safety improvements.”*

RSAP will meet eligibility requirements that allow local jurisdictions to apply for SS4A Implementation Grant program, and serve as a resource for jurisdictions to apply



## Self-Certification Checklist

Plan must include the following:

- Safety Analysis
  - Existing conditions and historical trends
  - Crashes by location, severity, and contributing factor
  - Systemic and specific safety needs
  - Geospatial identification of higher risk locations
- Identification of comprehensive set of projects and strategies





## Self-Certification Checklist

..And must complete 4 of the 6 elements

1. Leadership Commitment
  - Governing body publicly commit to a zero fatalities and serious injury goal
2. Plan Development
  - Committee charged with plan development, implementation, and monitoring
3. Development Activities
  - Engagement with public and relevant stakeholders
4. Equity
  - Data-driven, inclusive, and representative processes
5. Policies, Plans, Guidelines, and/or Standards
  - Assessment policies, plans, guidelines, and/or standards
6. Progress
  - Description on how progress will be measured over time

# RSAP Overview



# RSAP Overview

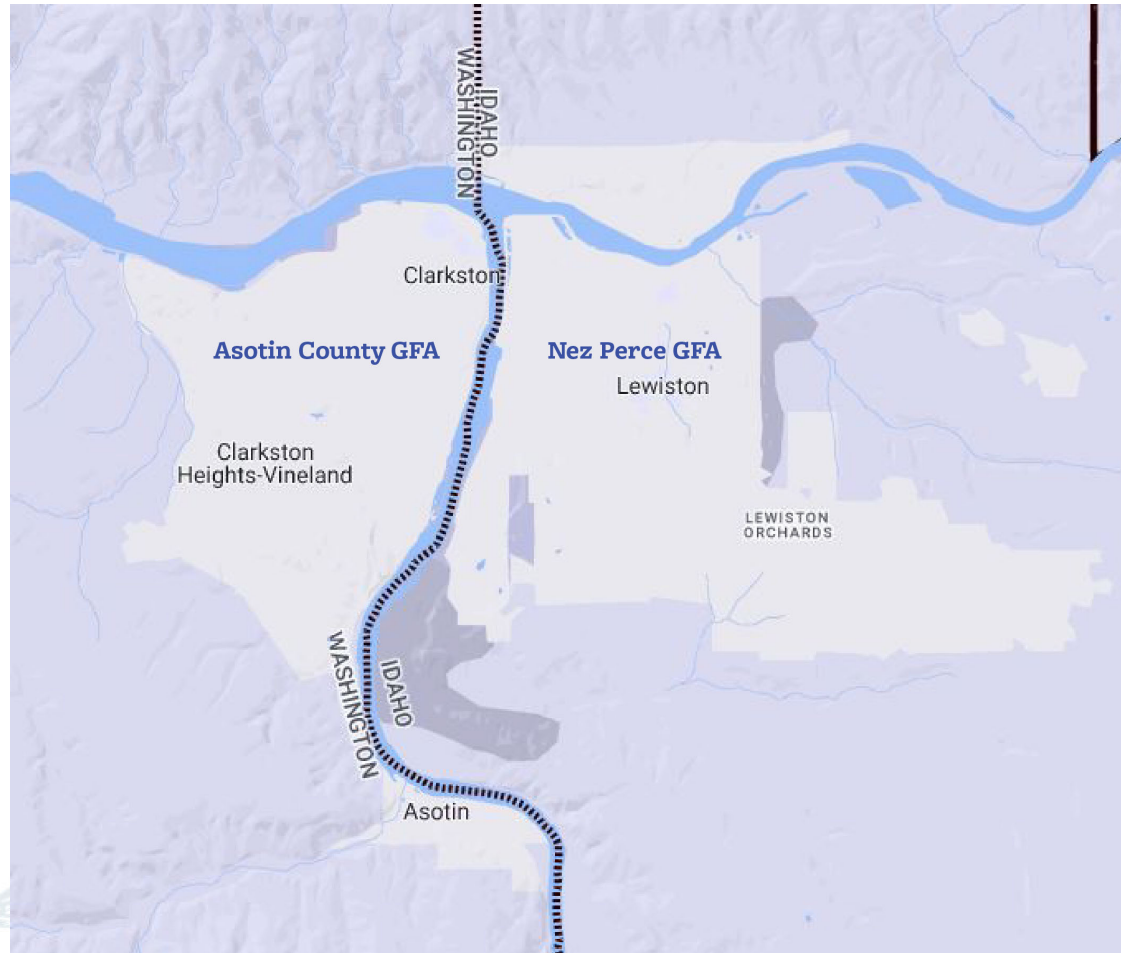
<i>Oct. 2023 – Mar. 2024</i>	<i>Mar. 2024</i>	<i>Mar. 2024 – July 2024</i>	<i>July 2024</i>	<i>July 2024 – Oct. 2024</i>	<i>Oct. 2024</i>
Safety Launch	Geographic Focus Area Safety Planning Team Meetings #1	Strategy and Project Selection	Geographic Focus Area Safety Planning Team Meetings #2	Draft and Final RSAP	<b>LCVMPO Committee Presentations</b>
Safety Analysis				Leadership Commitment	
	SS4A Regional Workshop				
	Safety Commitment Resolution				
<b>Engagement and Collaboration, Committee Meetings</b>					



## Planning Structure

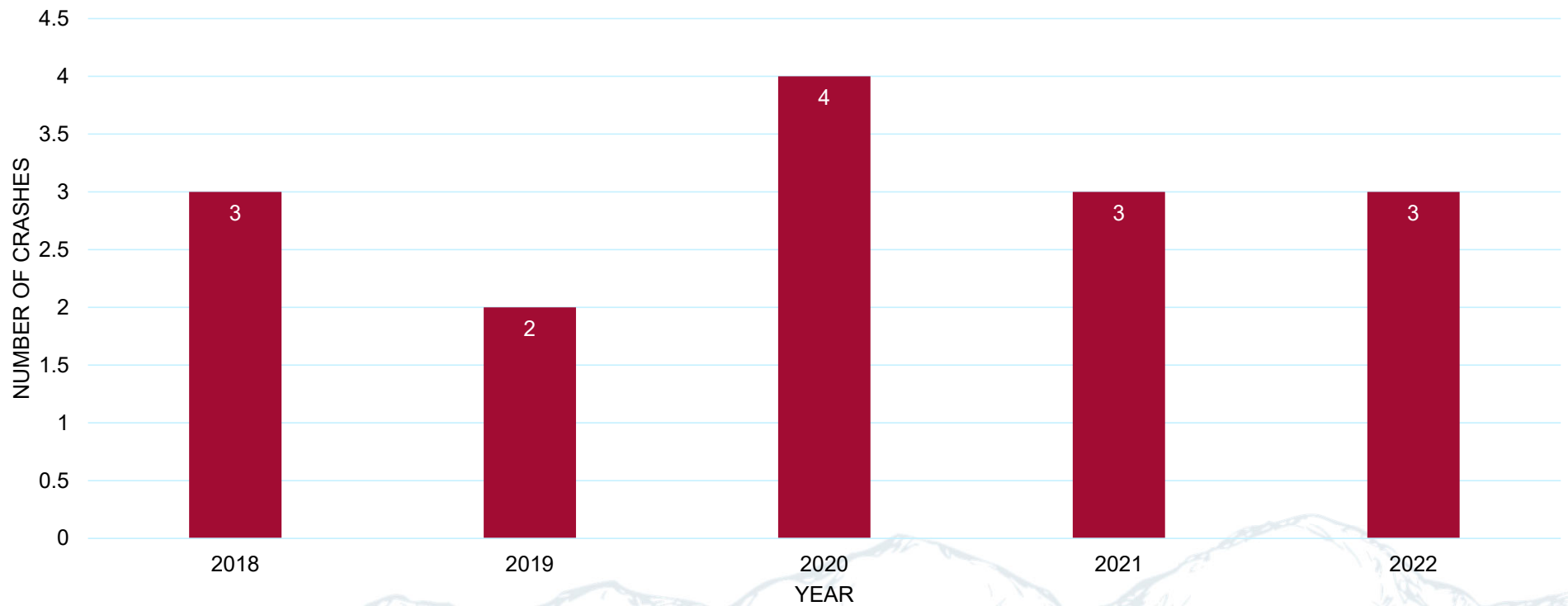
- RSAP Steering Team (LCVMPO Agency Members)  
Quarterly at key deliverables
- Geographic Focus Area (GFA) Planning Teams  
Two rounds (March 2024/Task4 and July 2024/Task8)
- Safety Launch and SS4A Safety Workshop  
Present DRAFT Report/Safety Commitment Resolution

# Geographic Focus Area Safety Planning Teams



# LCVMPO Safety Overview (2018-2022)

## Annual Fatal Crashes\*



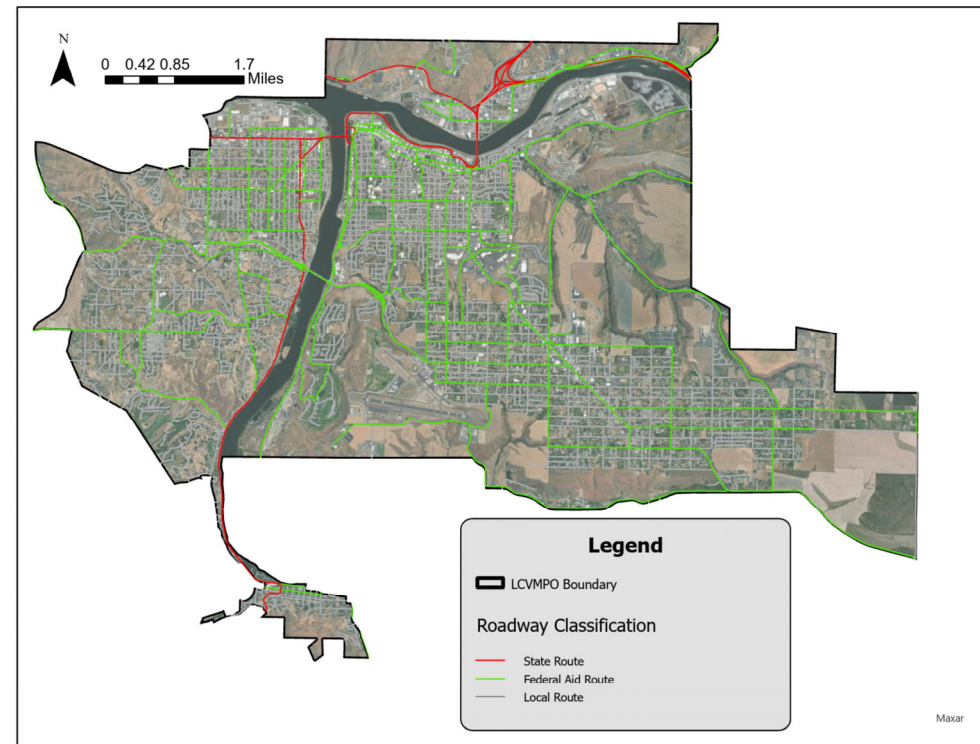
\*IN LCVMPPO AREA  
Asotin County & Nez Perce County

## LCVMPO Safety Overview

**State Route:** Roadways owned, operated, and maintained by ITD and WSDOT

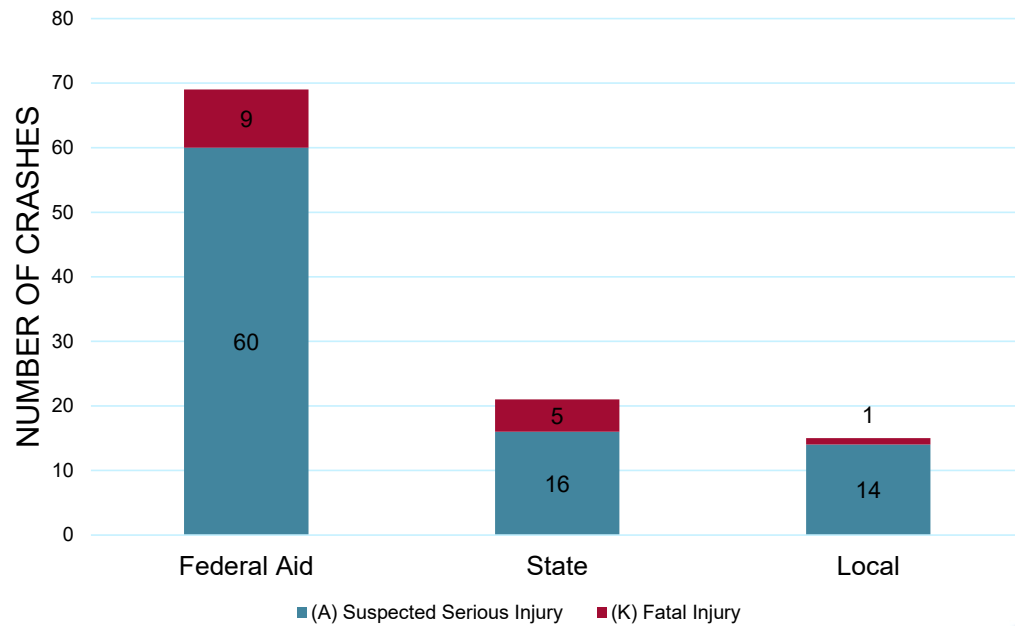
**Federal-Aid Route:** Non-ITD and non-WSDOT roadways eligible for federal funding – typically minor arterials and collectors

**Local Route:** Other non-ITD and non-WSDOT roadways, primarily collectors and residential streets

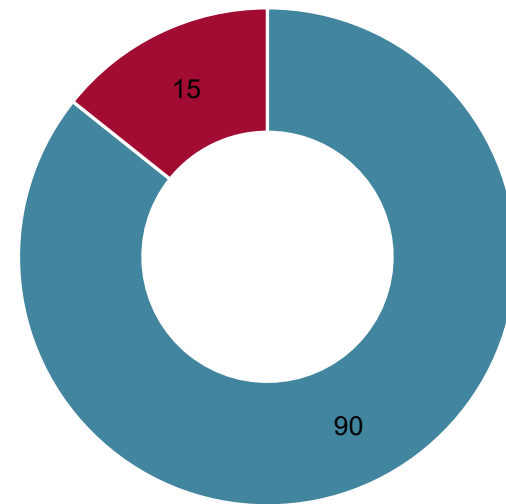


# LCVMPO Safety Overview (2018-2022)

Crashes by Route Type\*



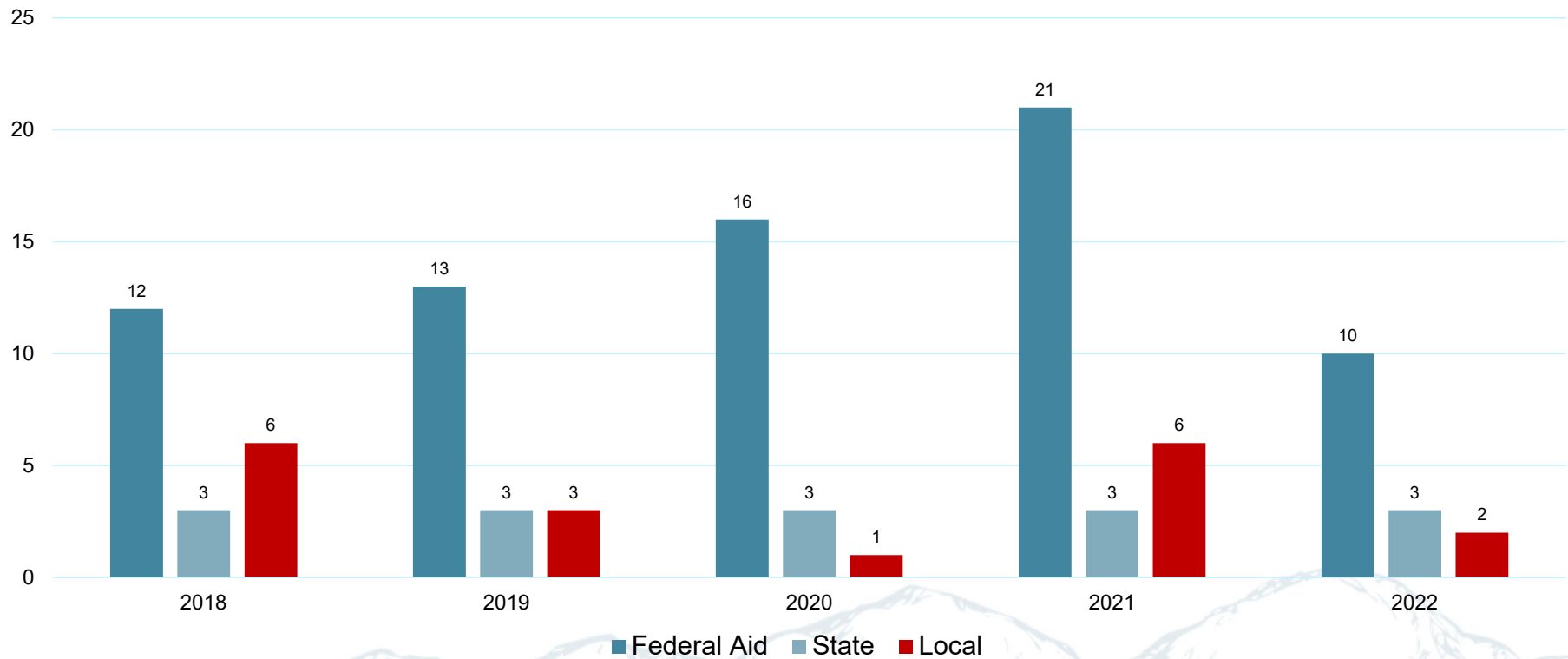
Crashes by Severity\*



\*IN LCVMPO AREA  
Asotin County & Nez Perce County



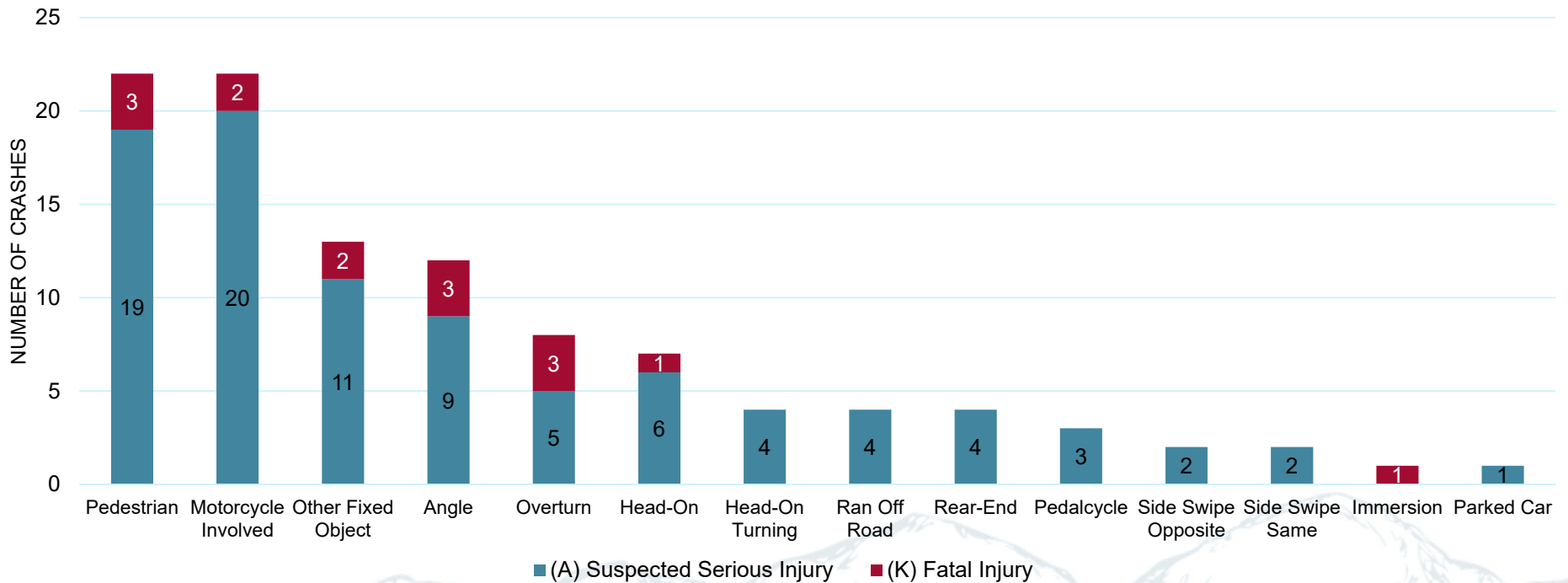
# LCVMPO Safety Overview (2018–2022)



\*IN LCVMPPO AREA  
Asotin County & Nez Perce County

# LCVMPO Safety Overview (2018-2022)

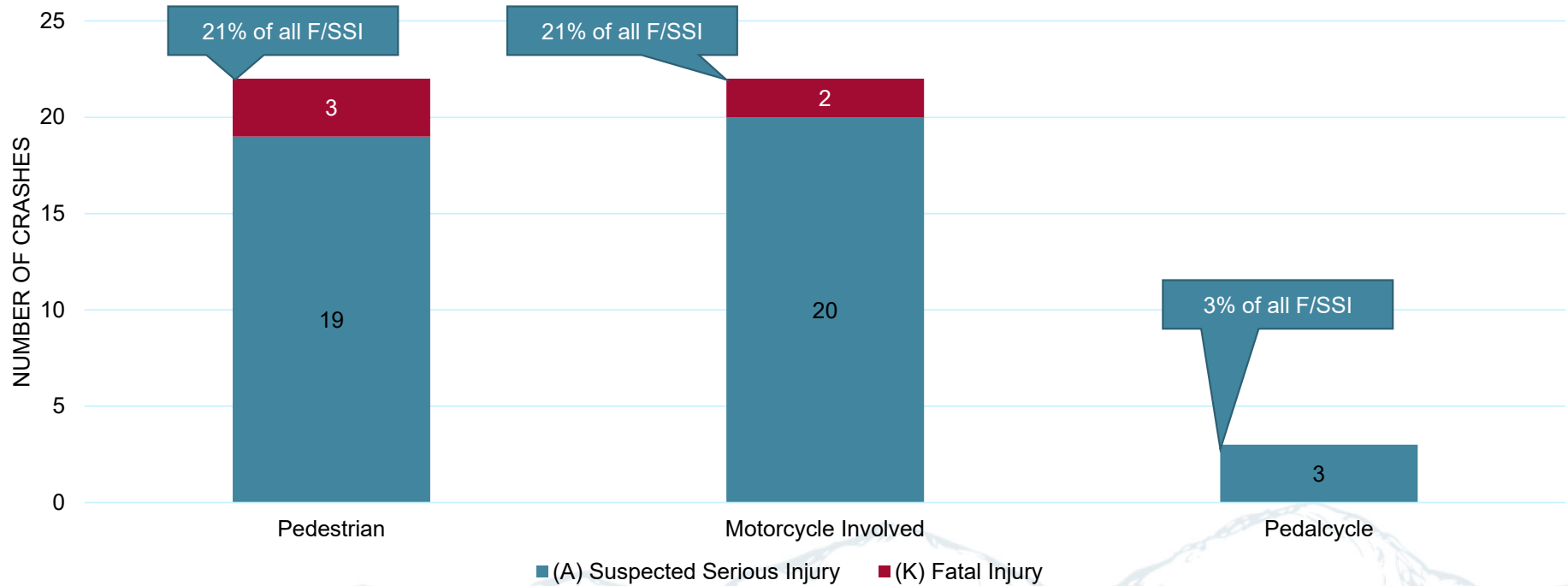
## Crashes by Crash Type\*



\*IN LCVMPO AREA  
Asotin County & Nez Perce County

# LCVMPO Safety Overview (2018-2022)

## Crashes by Vulnerable User\*



\*ANNUAL FATAL AND SERIOUS INJURY CRASHES WITHIN LCVMPPO AREA  
Asotin County & Nez Perce County

## Safe System Approach

**How does the  
United States  
*reach zero deaths?***



Source: [itd.idaho.gov](http://itd.idaho.gov)

## Safe System Approach



Transportation system design and operation should reduce crash severity and save lives by:

1. Anticipating human mistakes
2. Lessening impact forces

## Safe System Approach

The Safe System approach aims to eliminate fatal and serious injuries for all road users by:

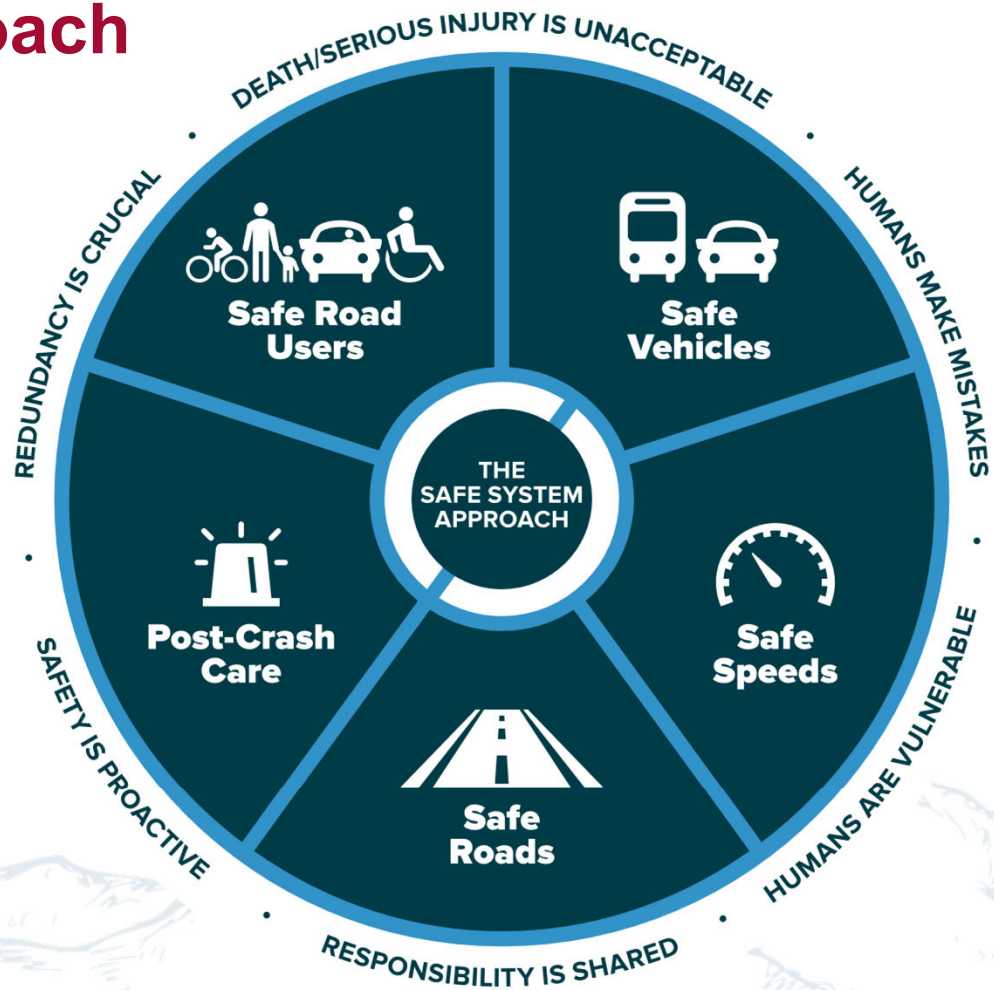
**Accommodating  
human mistakes**

**PARADIGM SHIFT**

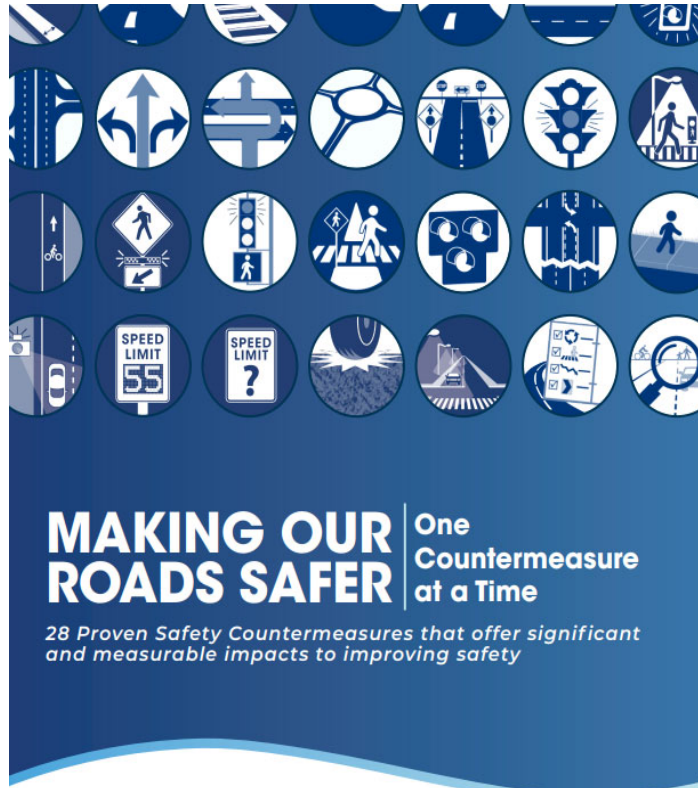


**Keeping impacts on the human  
body at tolerable levels**

# Safe System Approach



## “Double-Down” on what works



*Transportation agencies are strongly encouraged to consider widespread implementation of Proven Safety Countermeasures to accelerate the achievement of local, State, and National safety goals.*



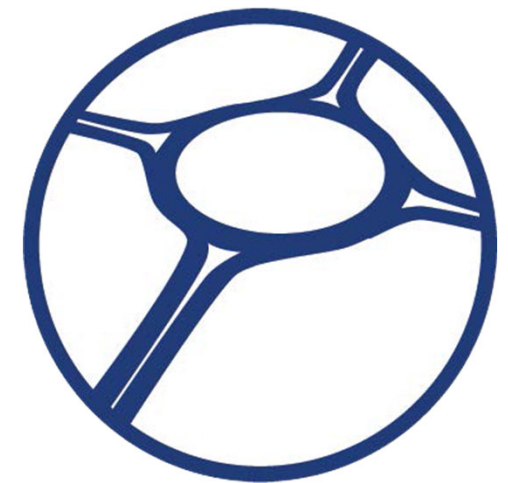
## Proven Safety Countermeasures



APPROPRIATE SPEED  
LIMITS



MEDIAN AND  
PEDESTRIAN REFUGE  
ISLANDS



ROUNDABOUTS

## Where are We on the Safe System Journey?

### Traditional approach

Prevent crashes →

Improve human behavior →

Control speeding →

Individuals are responsible →

React based on crash history →

### Safe System approach

Prevent death and serious injuries

Design for human mistakes/limitations

Reduce system kinetic energy

Share responsibility

Proactively identify and address risks

## Safe System Approach

**Implementing the Safe System approach is our shared responsibility, and we all have a role.**



## Next Steps

- Complete Safety Analysis
- Assemble GFA Safety Planning Team Members
  - City engineers, planners
  - City managers
  - Elected officials
  - Law enforcement
  - Emergency services
  - Community organizations
- Conduct GFA Planning Team Meeting #1 (March 2024)

## What can you do to prepare?

Participate in a GFA Meeting #1 (March 2024)

- Review High Crash/High Risk Locations
- Provide input on potential strategies
- Identify critical safety projects in your jurisdiction

Begin a dialogue with elected officials

- In support Regional Safety Commitment Resolution
- Secure 20% local match project funding

Provide comments at our project website



**Project website**

**[www.lcvmp.org/safetyplan](http://www.lcvmp.org/safetyplan)**



Questions?

